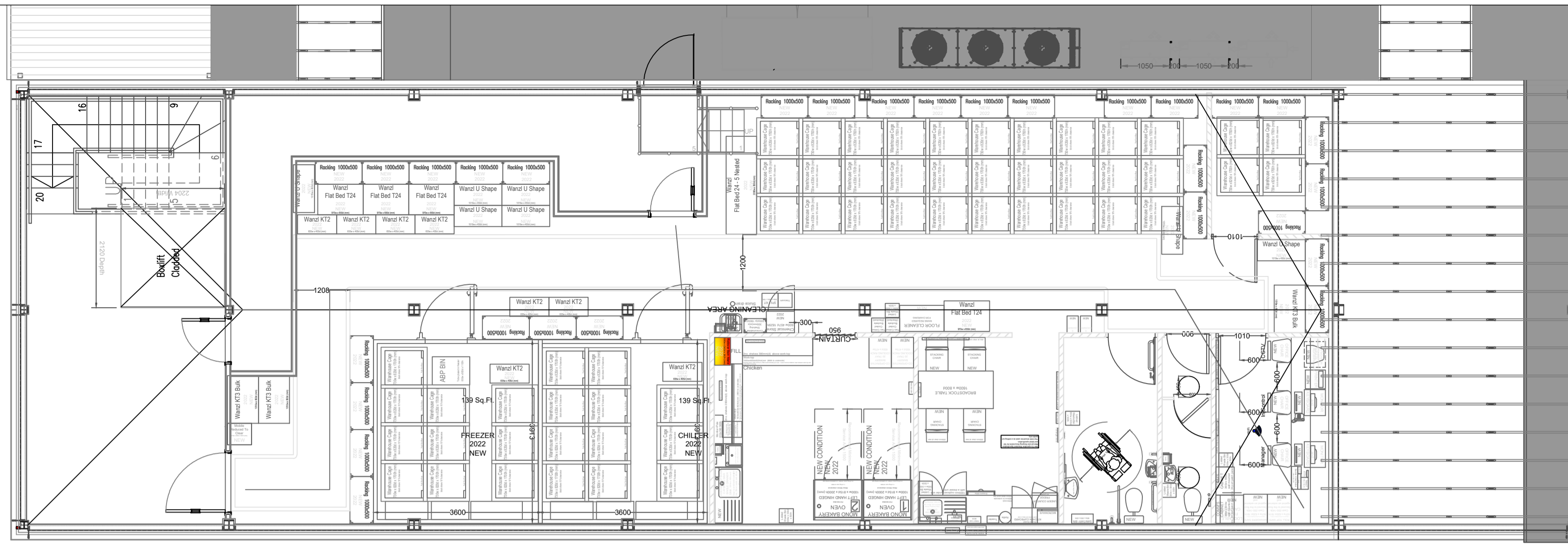
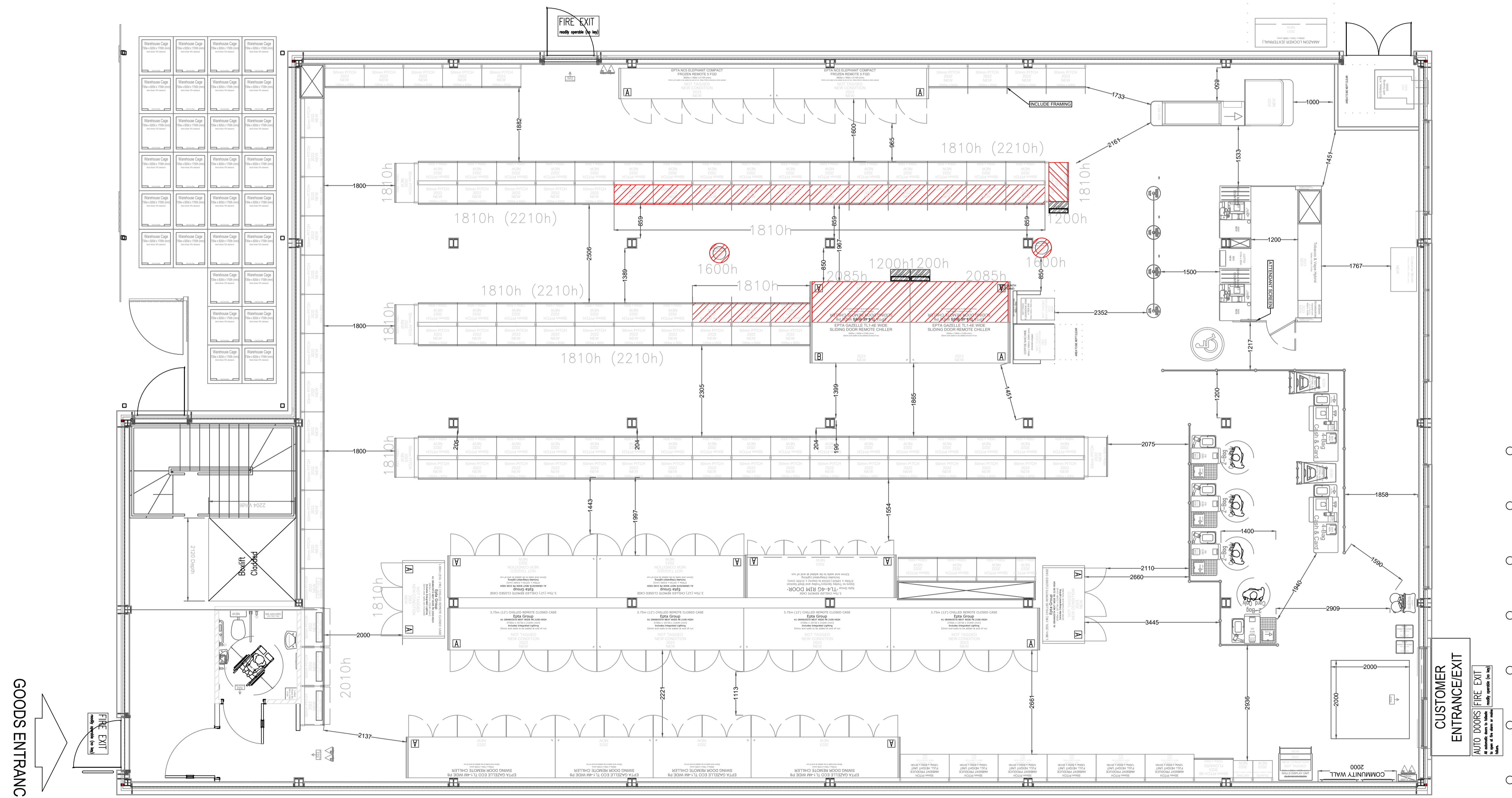


SITE MAP (NTS)



BACK OF HOUSE @1:75



SHOP FLOOR @ 1:75

Description of Amends
23.06.20 / P1F1M0 / AT
Draft Proposals

- 06.08.20 / P1F2M0 Asset planning amends for the sign off. AJ
- 11.08.20 / P1F3M0 BSW fixtures and ambient bays amended. AJ
- 02.02.21 / P1F4M0 / AL
New shell overlay
BOH reconfigured
- 15.02.21 / P1F5M0 / AL
Goods entrance relocated
BOH rooms reconfigured
ATM added
- 06.12.22 / P1F6M0 / AJ
New shell, sales and BOH amended
- 24.02.23 / P1F7M0 / AJ
ATM area revised due to need for boxing out and access door from external floor level. Kiosk swapped with belt to accommodate
- 28.02.23 / P1F8M0 / APW
 1. Kiosk and belt reverted to model locations.
 2. Belt educed to 1500mm.
 3. Move the ambient gondolas back 200mm.
 4. Move AST further down towards the entrance.
- 10.03.23 / P1F9M0 / APW
 1. DRS machine relocated.
 2. Updated overlay from architect, with lift and customer toilet amended as agreed.
- 10.05.23 / P1F10M0 / AJ
Unox oven changed to 1 Mono.
Drinks and snacks cases amended to gazelle.
BWS heights on ambient fixtures shown- no changes made
- 07.07.23 / P1F110 / APW
 1. Remove the DRS machine.

EXCEPTIONS
Any areas of the proposal that are not in-line with the current model should be detailed here along with the reason and thinking behind it. To also include any by-laws or covenants.

Notes	Additional Equipment
All dimensions to be checked on site before starting work.	VND #
	Magazines #
	Cards #
	Crisps Impulse -
	Pizza Space #
	BWS Prom #
	Grocery Prom #
	Roll Cages BOH #
	Promo Plinths #
	Basket & Trolley Matrix
	Type No.Stacks
	Standard Basket #
	Wheeled Basket #
	Small Trolley #
	Large Trolley #
	Wheelchair Trly #
	Top Shelves: Yes
	<small>See Top Shelf Rules for specific guidance.</small>

BWS Cap. Sq m
Total 40.98
Sales Floor 40.98
Kiosk 0.00

General Areas	Existing	Proposed
Gross Building Area (GBA)	- Sq.Ft.	8804 Sq.Ft.
Gross Sales Area (GSA)	- Sq.Ft.	5618 Sq.Ft.
Net Sales Area (NSA)	- Sq.Ft.	5580 Sq.Ft.
Back of House Areas		
Back Of House	- Sq.Ft.	2034 Sq.Ft.
Back Up Chilled	- Sq.Ft.	138 Sq.Ft.
Back Up Frozen	- Sq.Ft.	138 Sq.Ft.

Programme:	2023 Acquisition
Format:	EC+
Risk Rating:	TBC
Bay Count:	184

Proposal Number:	Fixture Revision:	Merchandising:
P1	F11	M0
Andrew.Wignall@coop.co.uk		

Survey Status TBC
Drawing Status Draft

SELKIRK, HIGH STREET
115-117 High Street
Selkirk
Scotland
TD7 4JX

Hub Number: #	
Store Phone: TBC	
Only scaled on A1	
The Co-Op, 1 Angel Square, Manchester, M80 8AG	